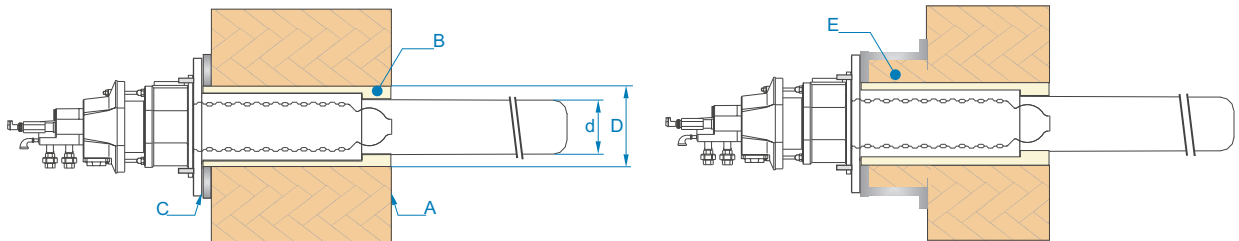
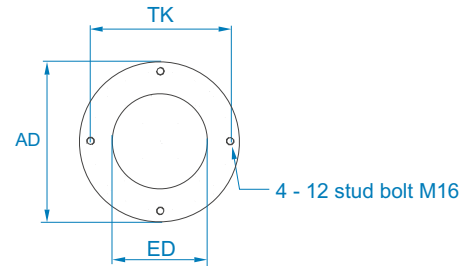


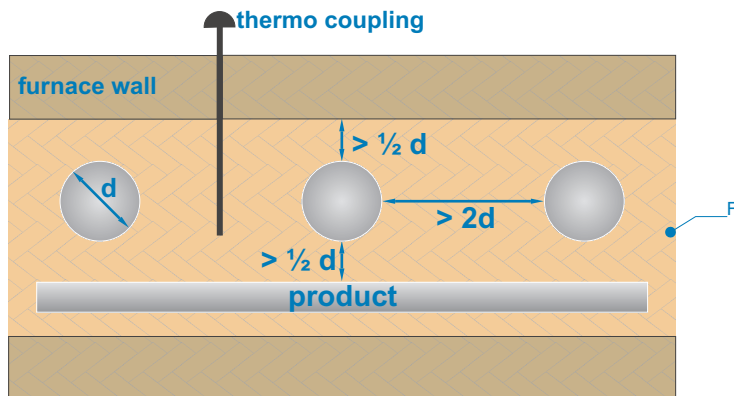
Installation requirements for REKUMAT® C radiant tubes

dimension furnace flange

	Outside- Ø AD [mm]	Pitch- Ø TK [mm]	Install- Ø ED [mm]	Radiant tube- Ø d [mm]
CX200 C100	250	210	150	100
CX200 C150	320	280	220	145
CX200 C200	375	335	275	195



Customization is possible



- A: The recuperator nozzle must be flush with the hot-face of the furnace, take notice of the recuperator fitting length.
- B: The part of the radiant tube which is in the furnace wall must be completely insulated.
- C: Angularity and planeness of the furnace flange must be according to WS installation drawings.
- D: installation opening = radiant tube diameter + 30mm
The installed radiant tube must not be subject to any lateral force e.g. from the furnace wall.
- E: Insulation thickness on off-set flanges must be according to WS installation drawings.
- F: Depicted minimum distances are recommendations, speak with our sales representative before choosing smaller values.



© 2001